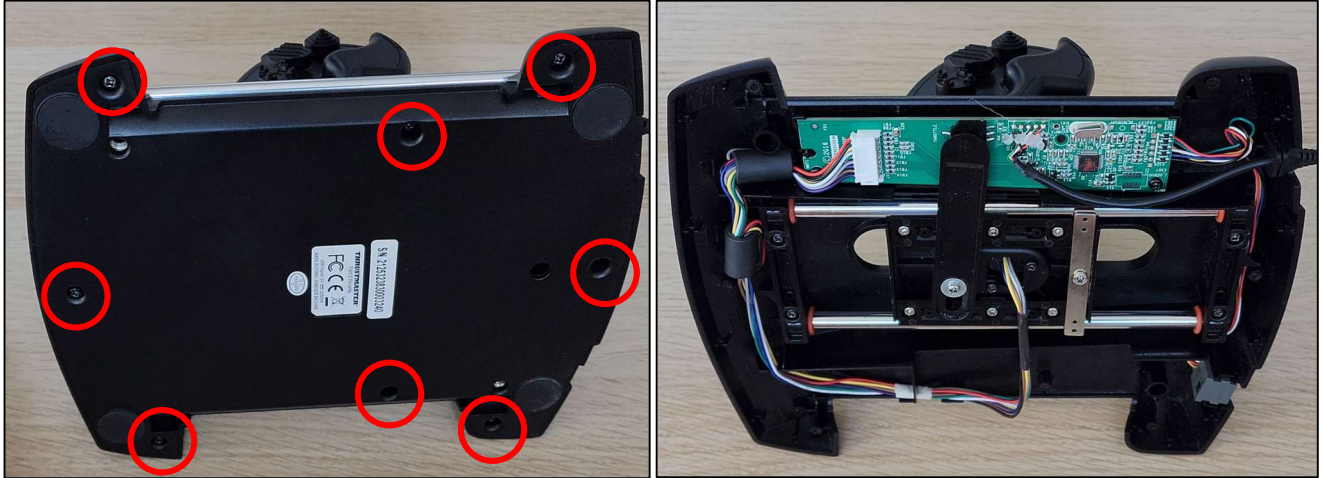


Note: The following is meant to supplement the original video guide used for the previous slider design. Please read the entire document before proceeding to the video.

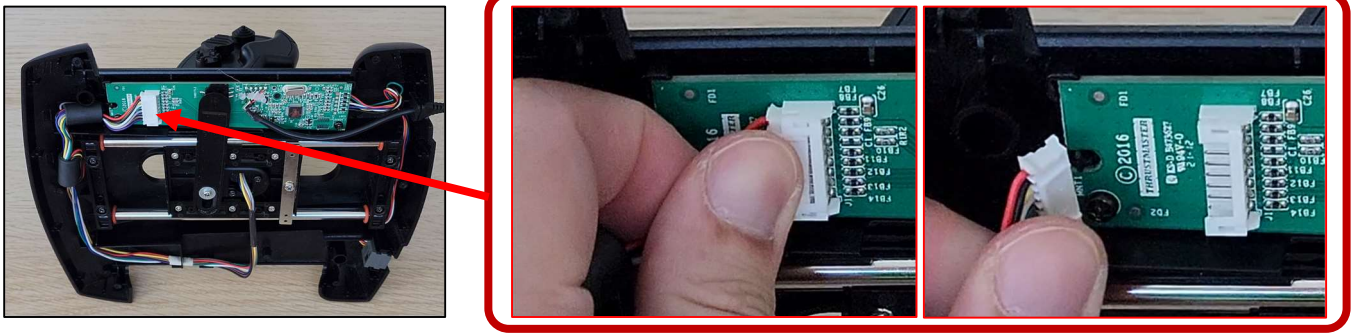
A. Disassembly

1.) Unscrew and Remove Back Cover

(Take Pictures of the Internals for Use as reference for Reassembly)

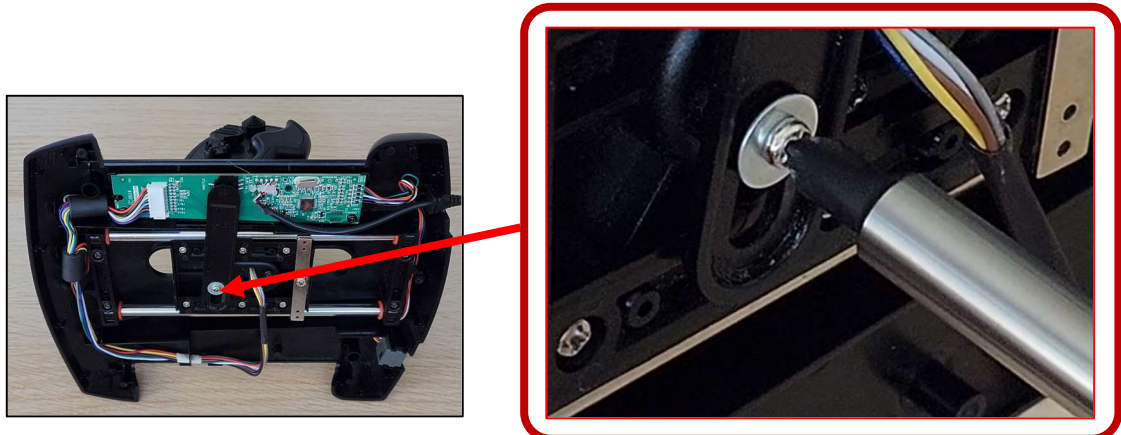


2.) Unplug Throttle Connector from Main Board

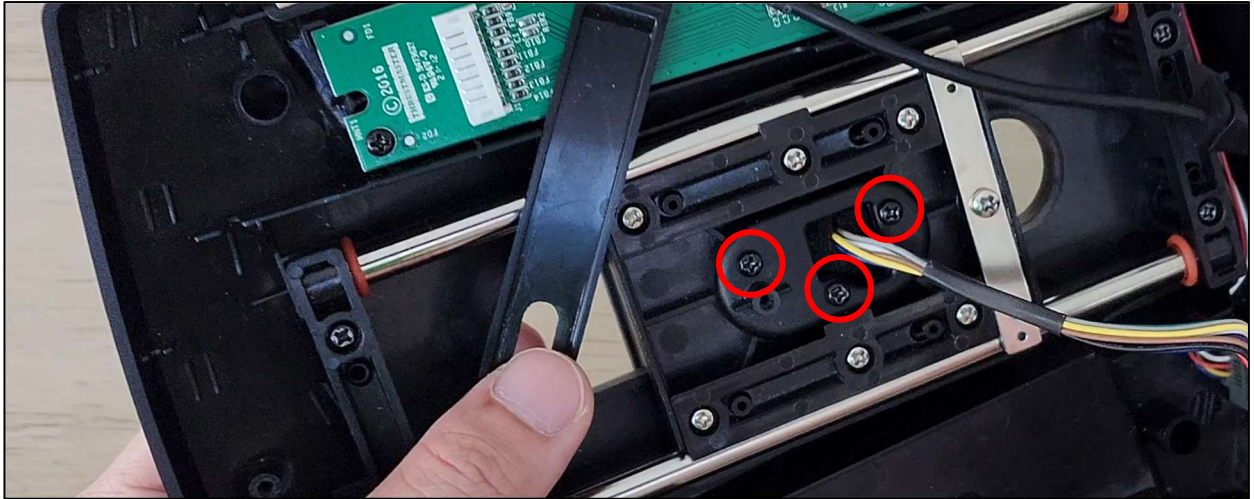


3.) Unscrew Potentiometer Arm Screw

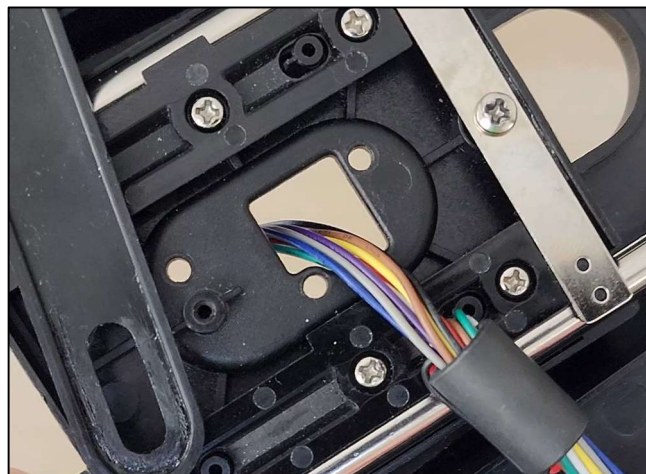
(Put Aside the Screw and Washer to Install Later)



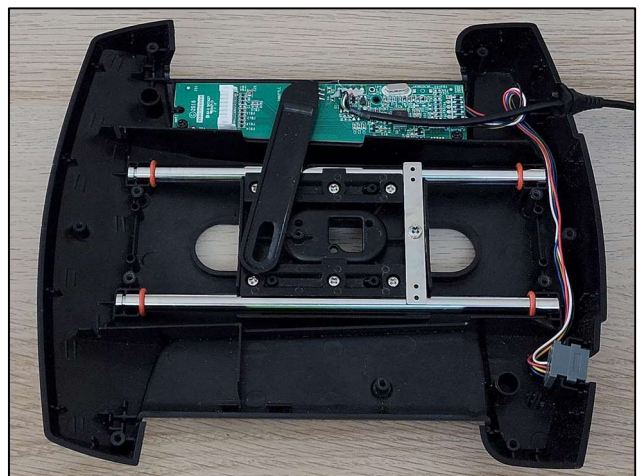
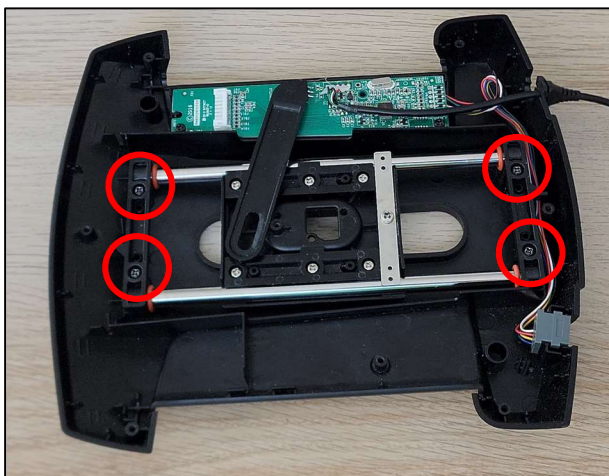
- 4.) Unscrew Throttle Handle from the Stock Slider
(Put Aside Screws to Install Later)



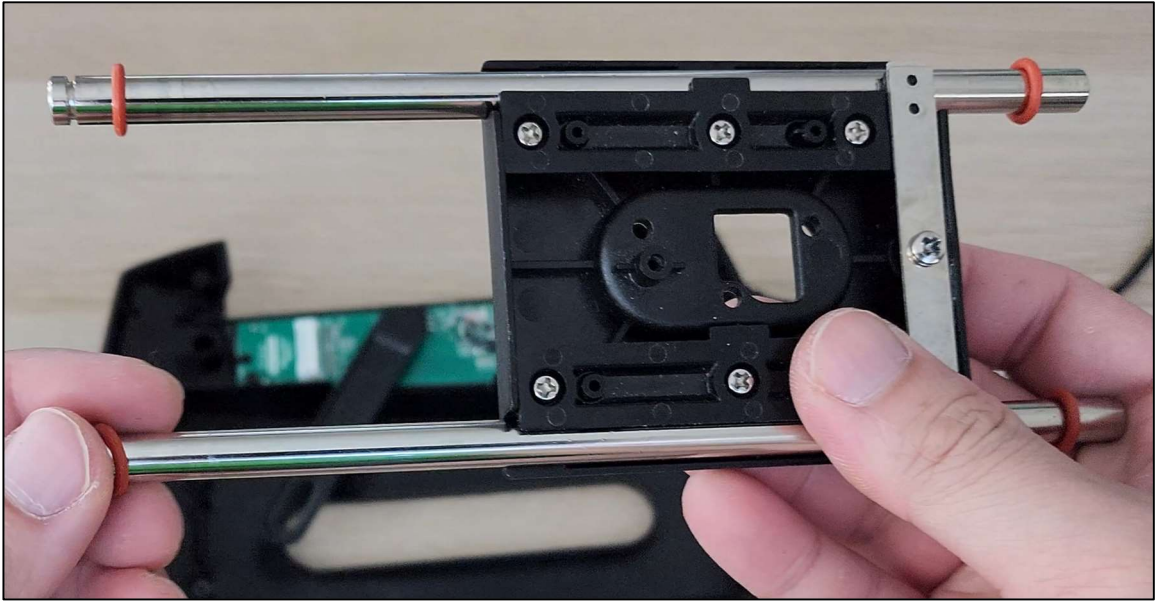
- 5.) Remove Throttle Handle & Thread the Data Wires Through the Hole on the Slider.



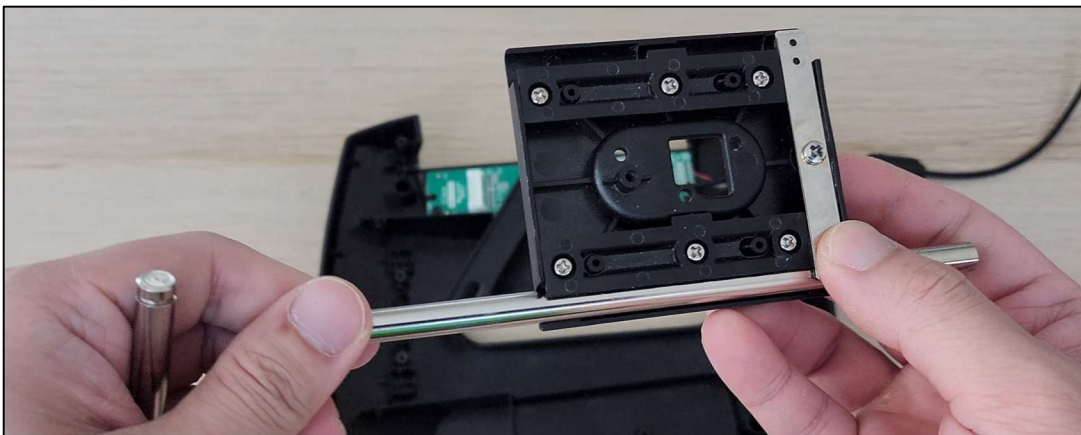
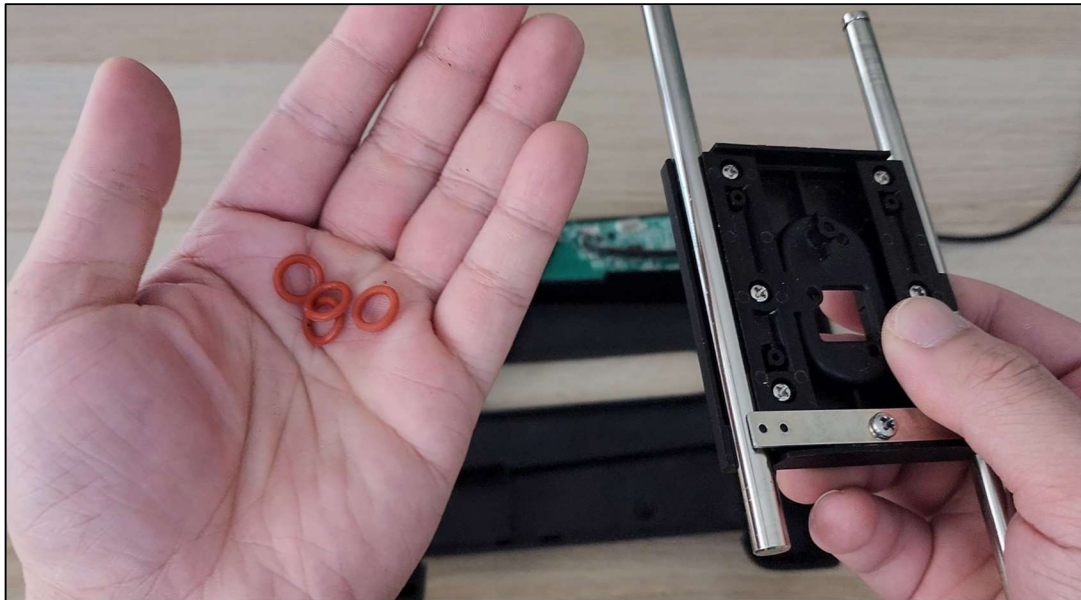
- 6.) Unscrew and Remove Guide Rod Brackets



7.) Remove Guide Rod and Slider Assembly

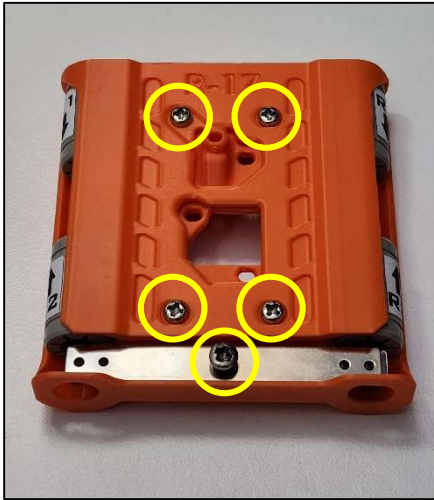
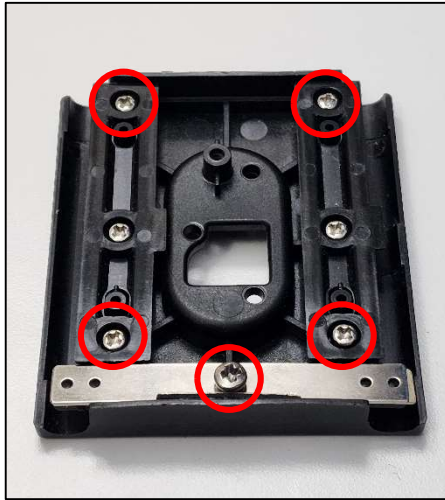


8.) Put Aside O-Rings and Guide Rods



B. Assemble Panzer V2 Slider

1.) Transfer Screws and Brake Assembly (OPTIONAL) to the Panzer V2 Slider:



2.) How to Align Polymer Bearings:

Alignment stickers on the polymer bearings are used to compensate for the slight manufacturing variations between polymer bearings.

- **4x Polymer Bearings**



- **2x Polymer Bearings + 2x Metal LM8LUU**

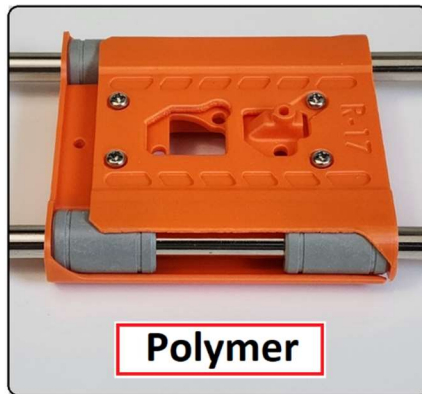


3.) Bearing Placement Guide

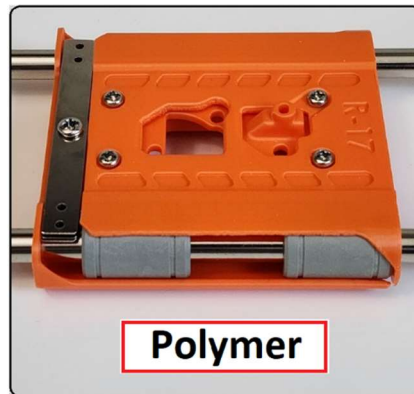
It is generally recommended to locate bearings as far apart as possible. The image below shows recommended bearing spacing for different configurations.

- **4x Polymer Bearings**

(Without Factory Brakes)

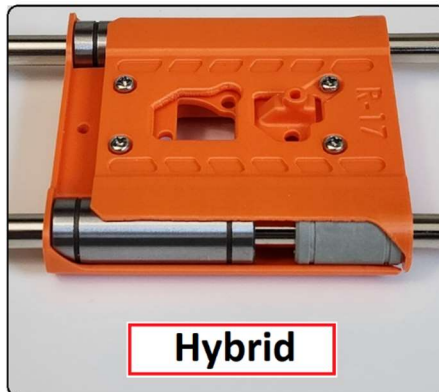


(With Factory Brakes)



- **2x Polymer Bearings + 2x Metal LM8LUU**

(Without Factory Brakes)

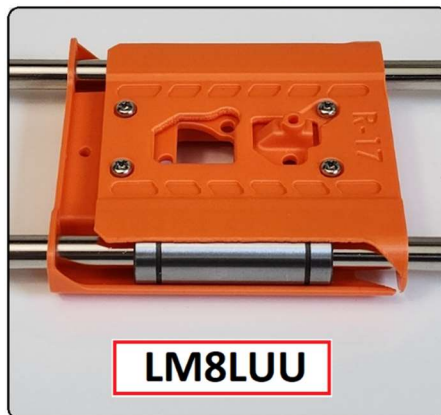


(With Factory Brakes)

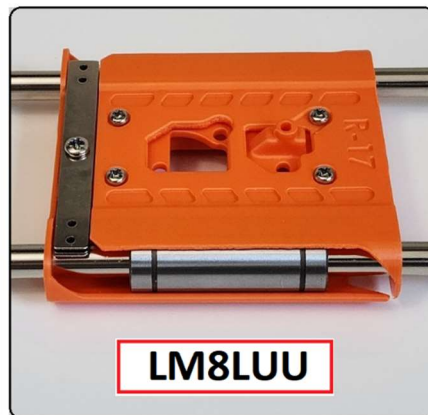


- **2x Metal LM8LUU**

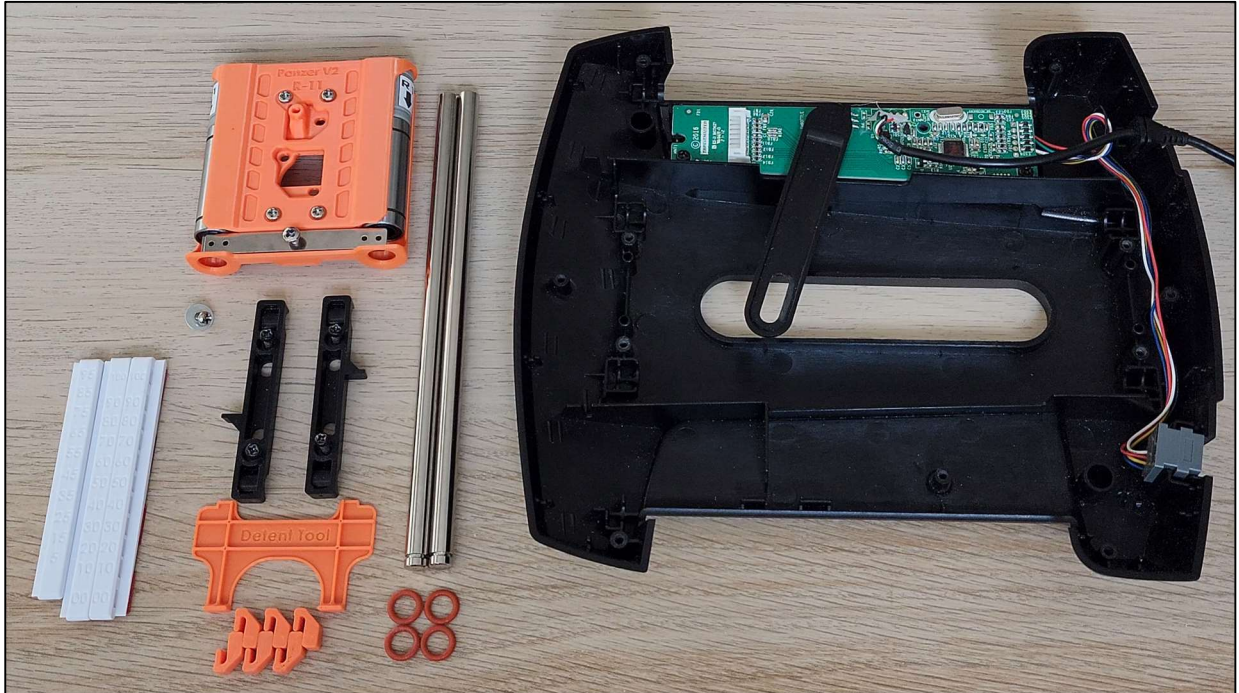
(Without Factory Brakes)



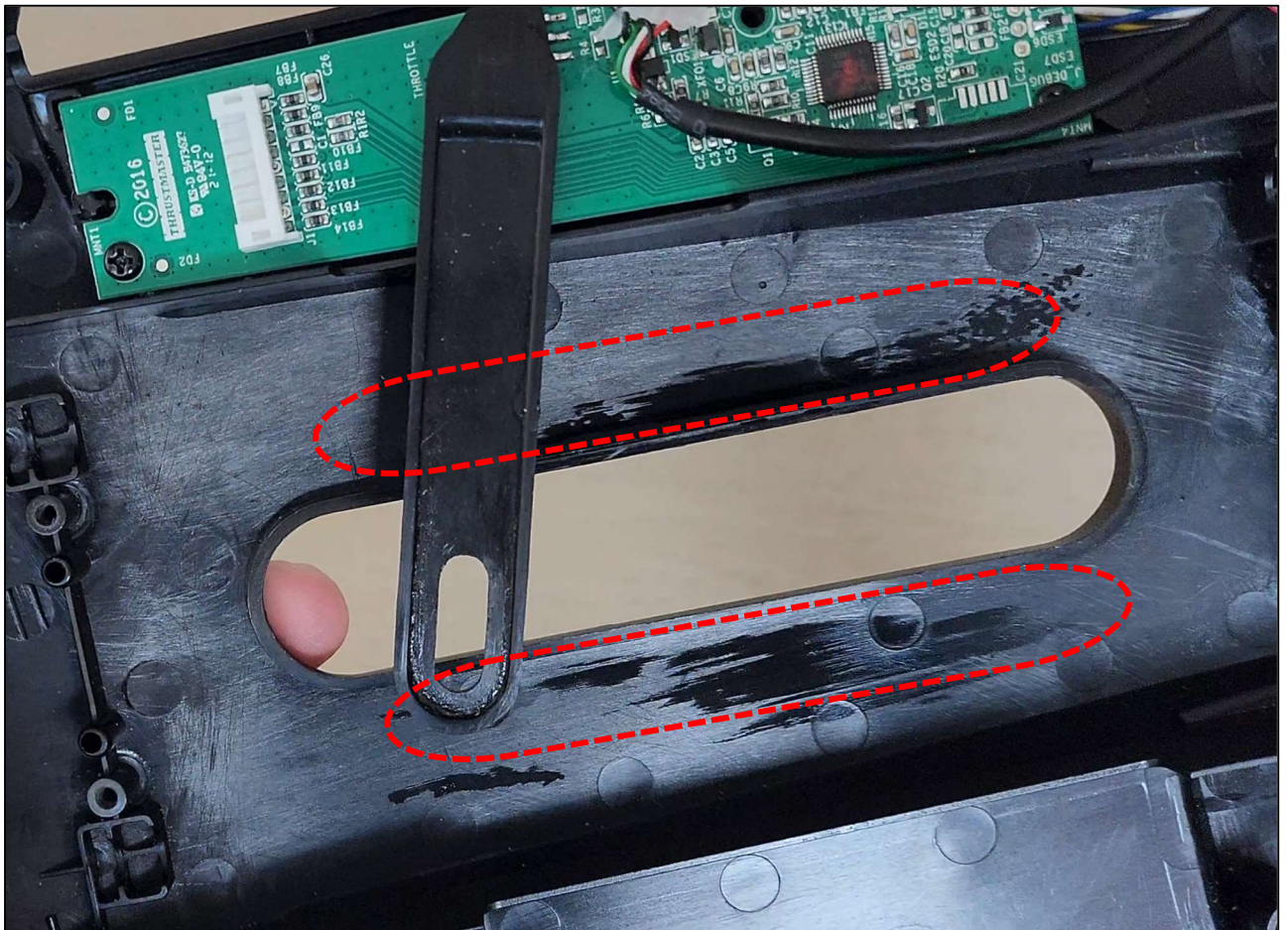
(With Factory Brakes)



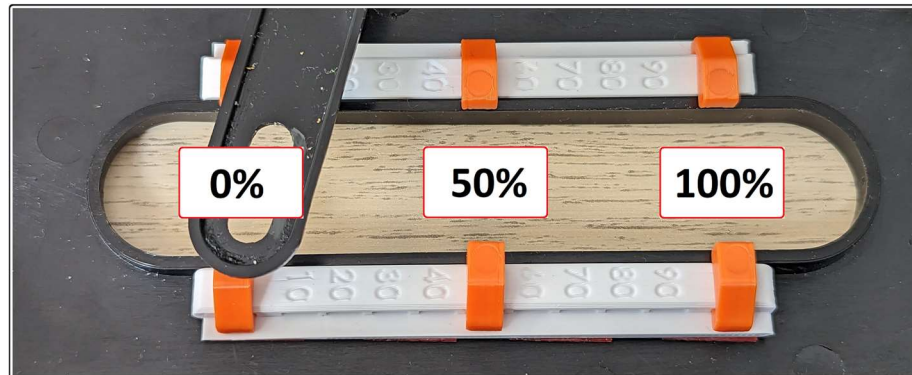
c. Install V3 Detent System



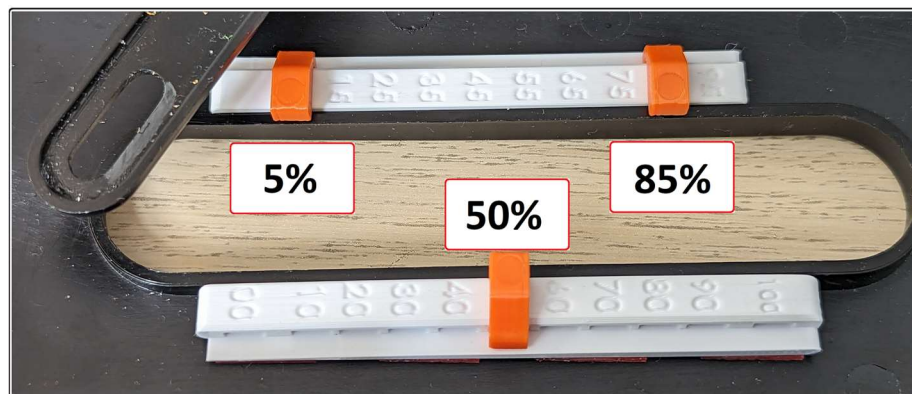
1.) Clean the Surfaces with Alcohol Wipe as Indicated



2.) Select Preferred Detent Configuration

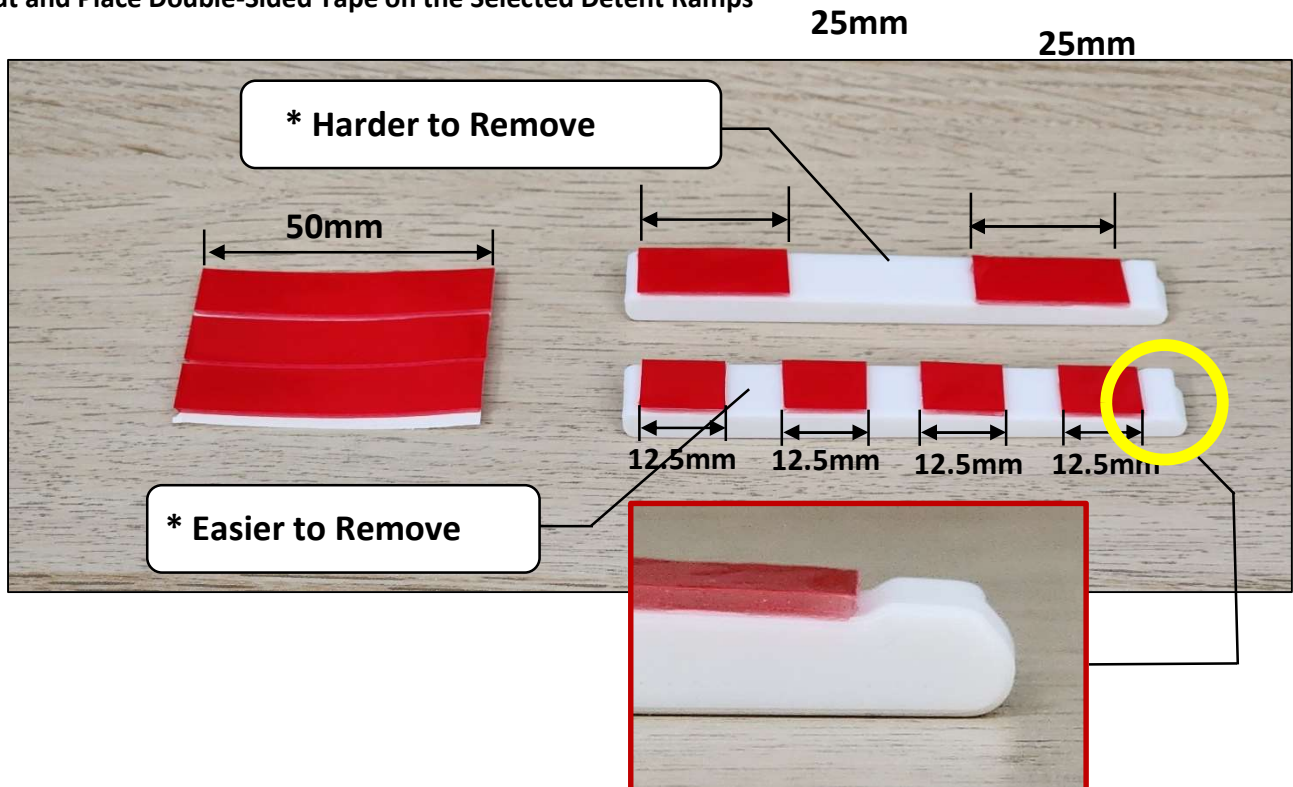


Config 1: 2x 10's Ramp (Double Strength / Multiples of 10%)

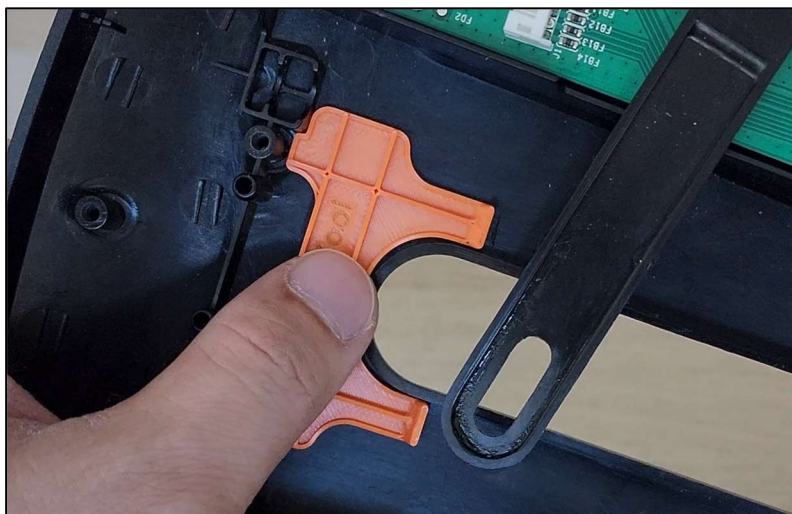


Config 2: 1x 5's and 1x 10's Ramp (Multiples of 5% & 10%)

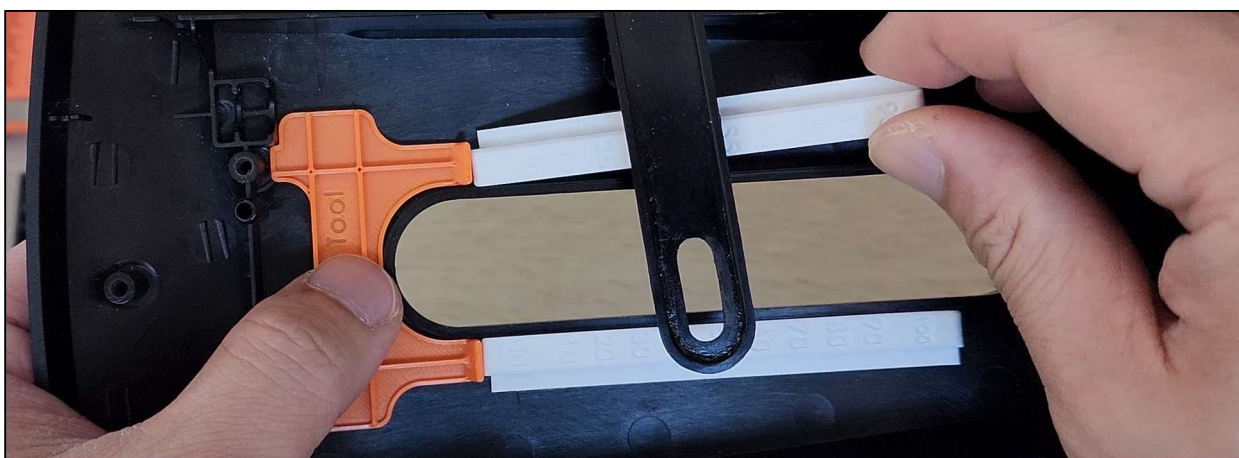
3.) Cut and Place Double-Sided Tape on the Selected Detent Ramps



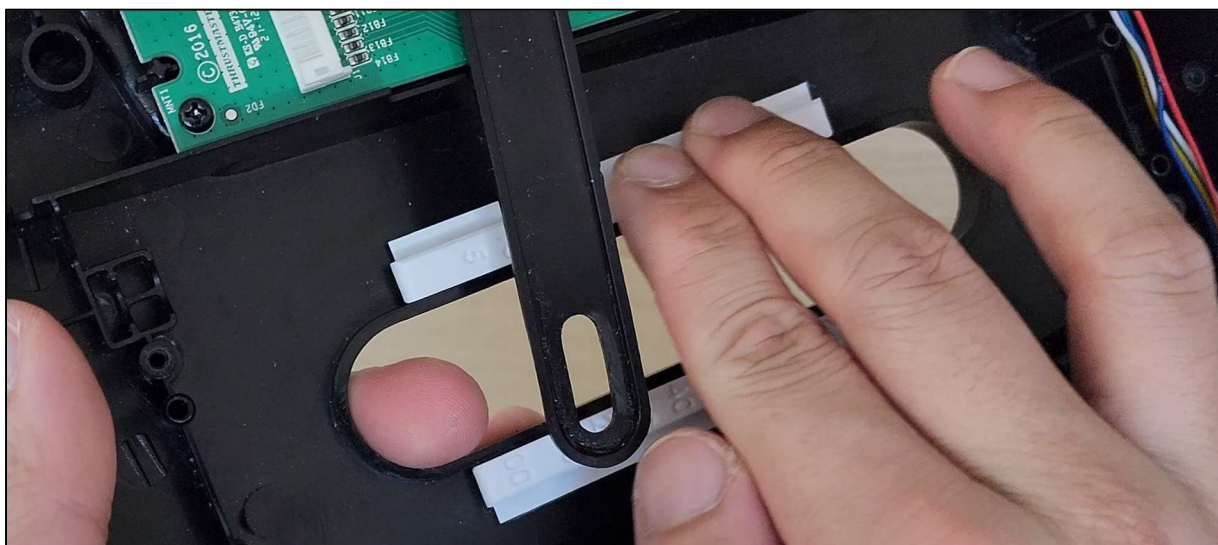
4.) Place Detent Locating Tool as Shown



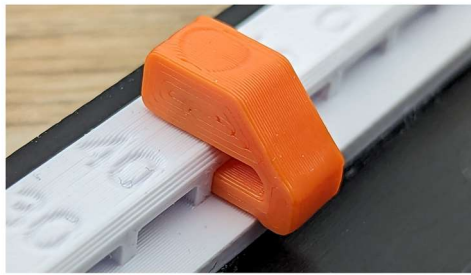
**5.) Remove Adhesive Backing and Use the Detent Tool to Locate the Ramps.
(The 0%/5% end should rest on the Detent Tool)**



6.) Remove Detent Tool and Firmly Press down to Adhere the Ramps.



7.) Align Detents on Preferred Locations and Press in to Lock Them into Place



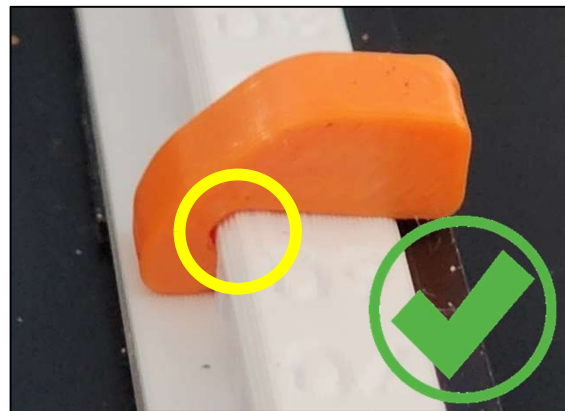
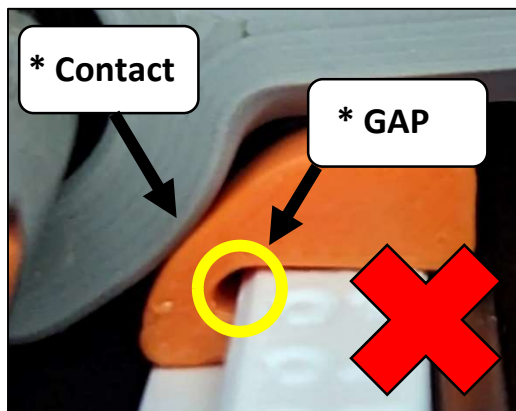
Step 1: Align Detent with Desired Slot



Step 2: Press in to Lock the Detent into the Slot



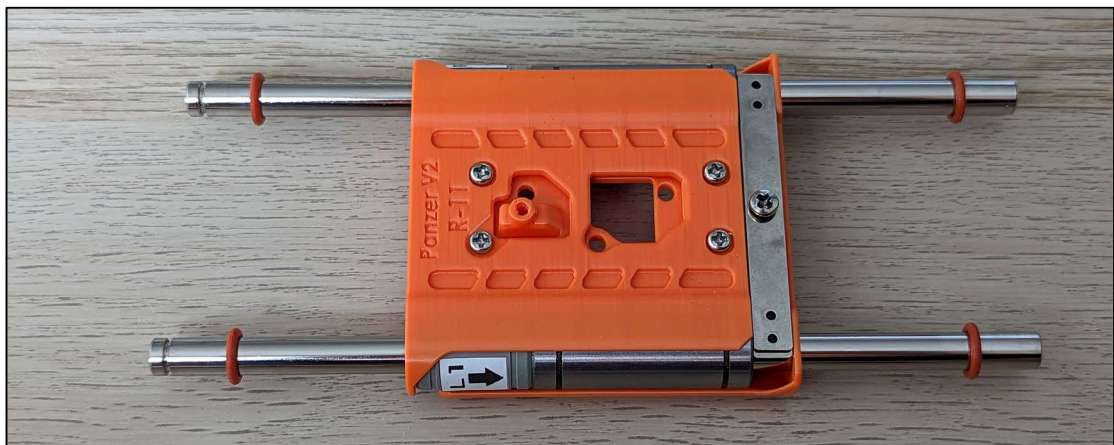
8.) Ensure that Detent Magnets are Pushed in all the way to Prevent Contact with the Slider



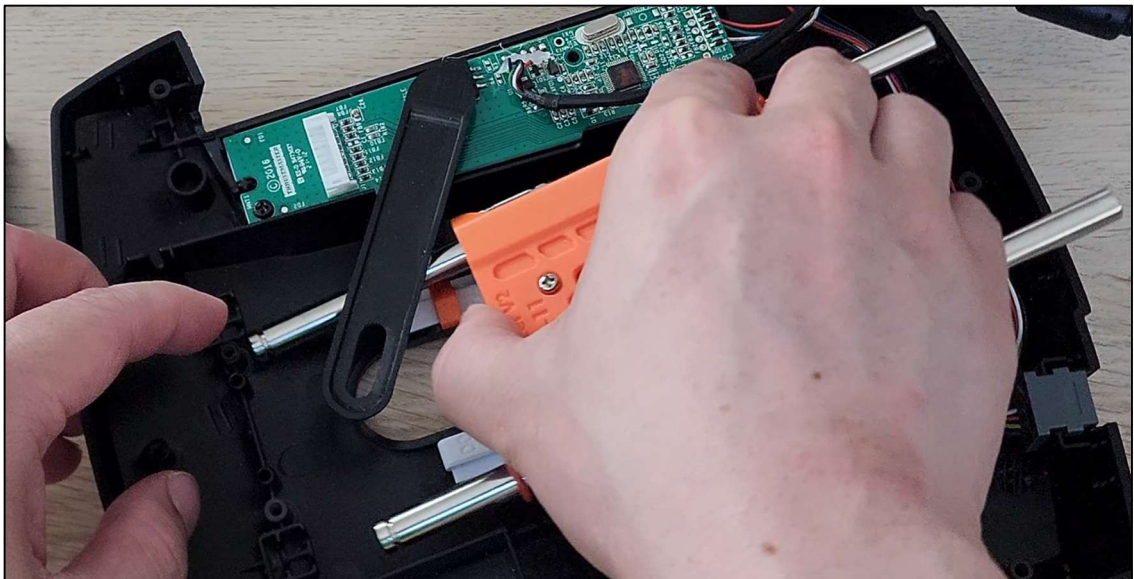
D. Install Slider Assembly



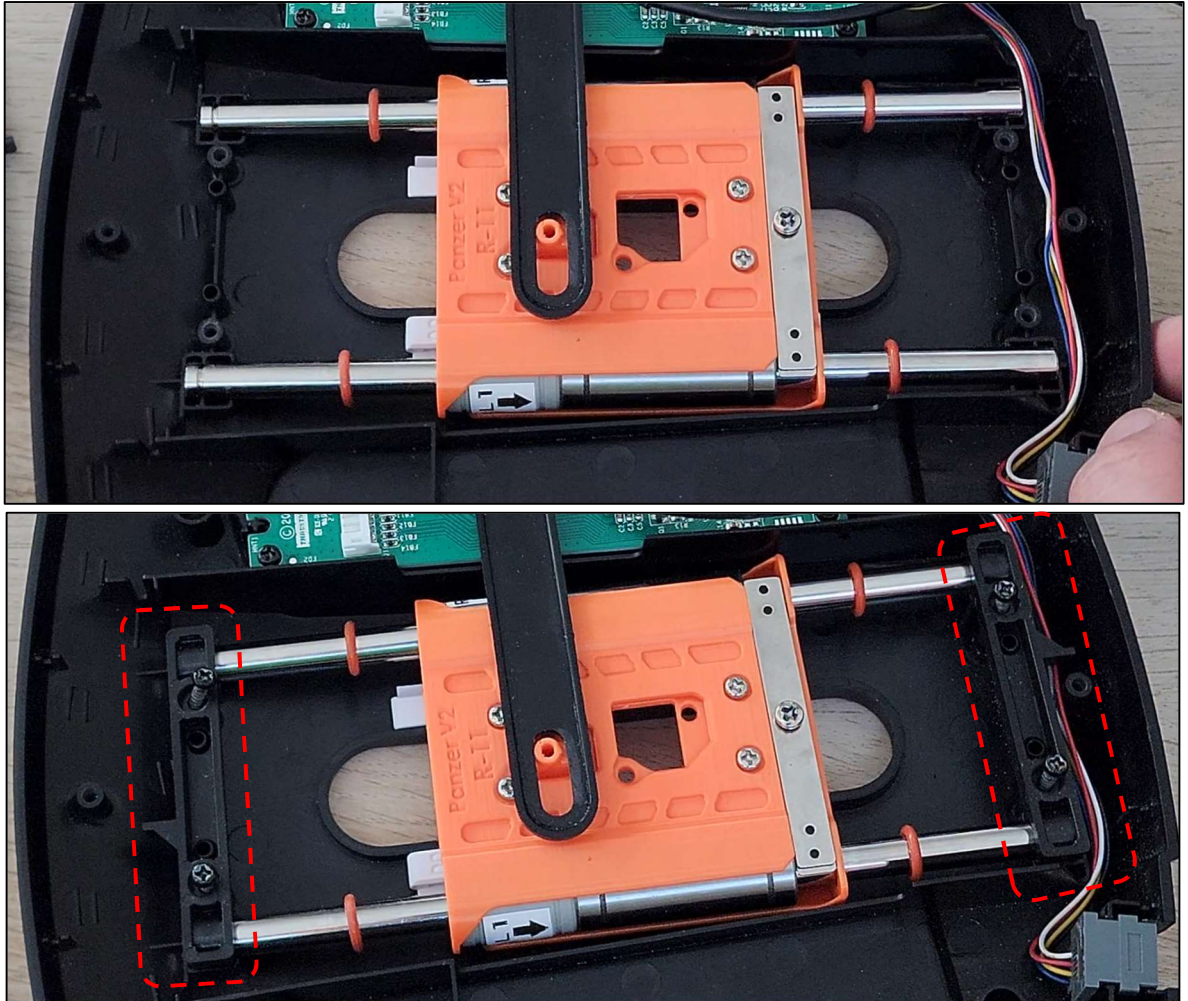
1.) Insert Guide Rods Through the Bearings and Place O-Rings as Shown



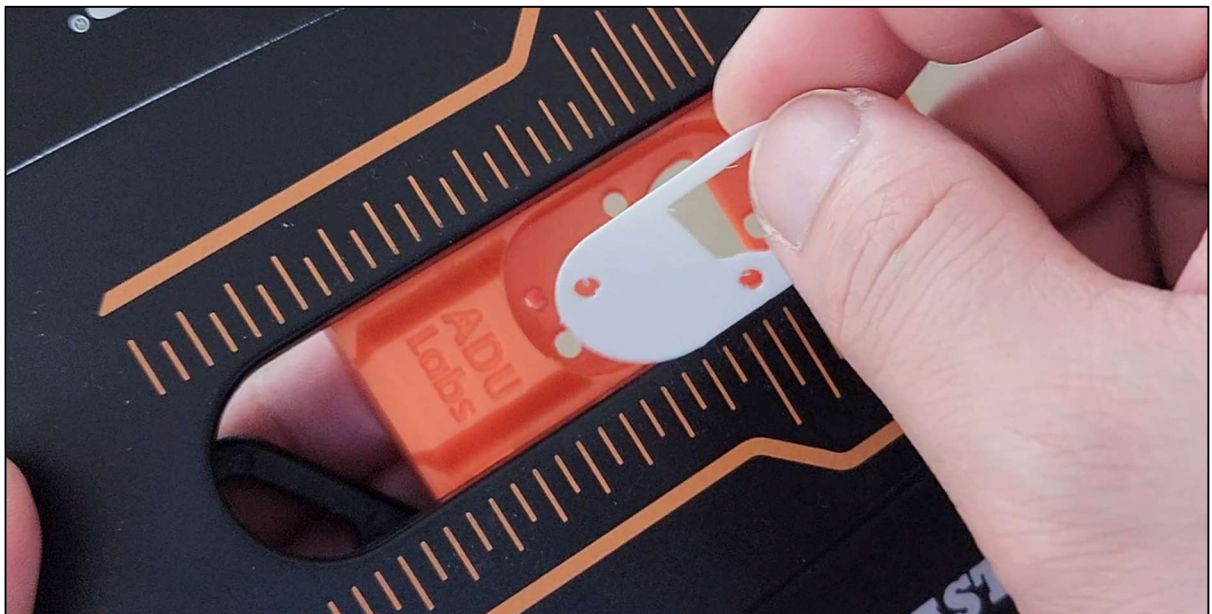
2.) Place the Assembly Back Into the Top Cover



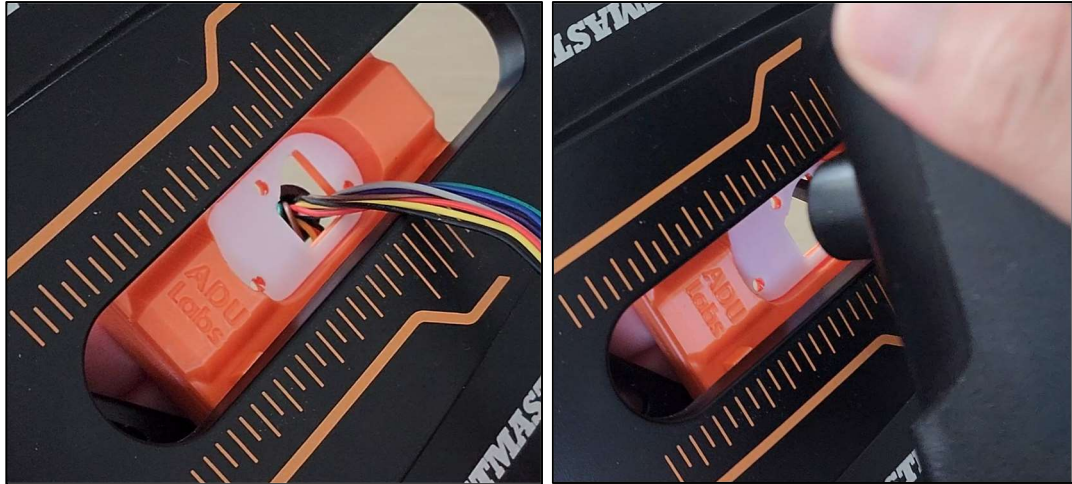
3.) Screw In Left and Right Brackets



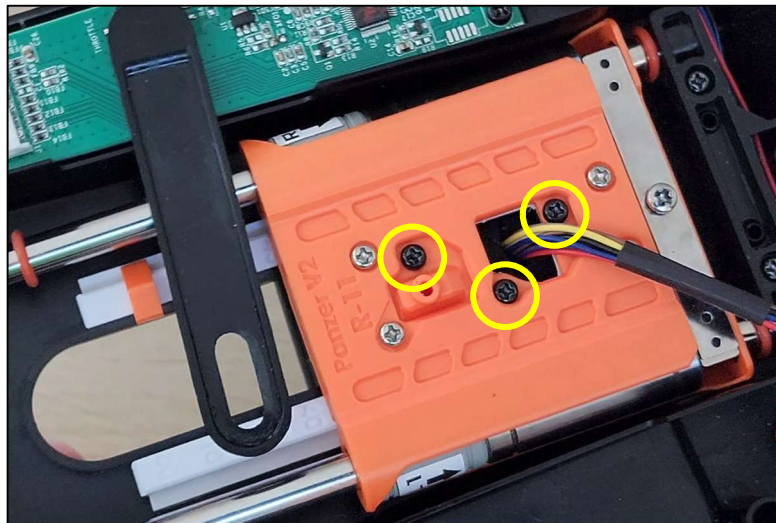
4.) Flip the Assembly Right-Side Up and Place the TPU Grip Pad into the Recess as Shown



5.) Thread in the Throttle Handle Wires and Place the Throttle Stem into the Recess



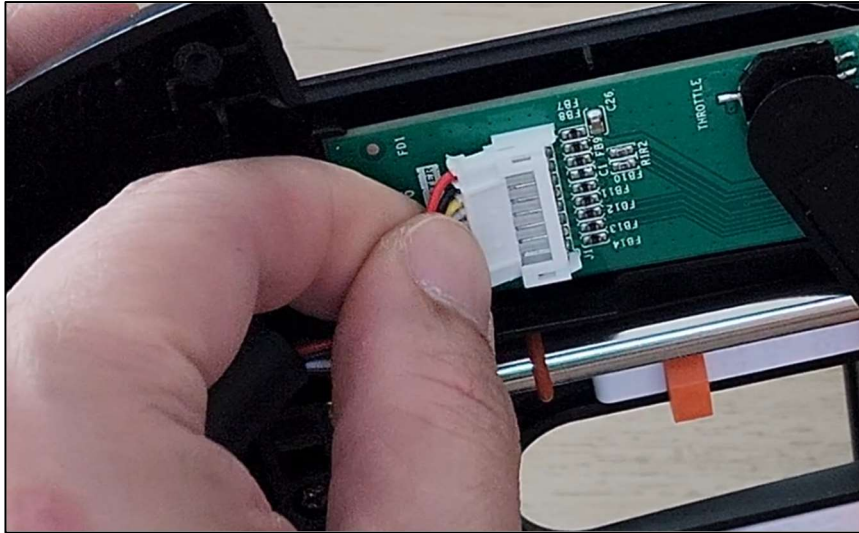
6.) Screw In (3 Screws) the Throttle Stem Through the Slider



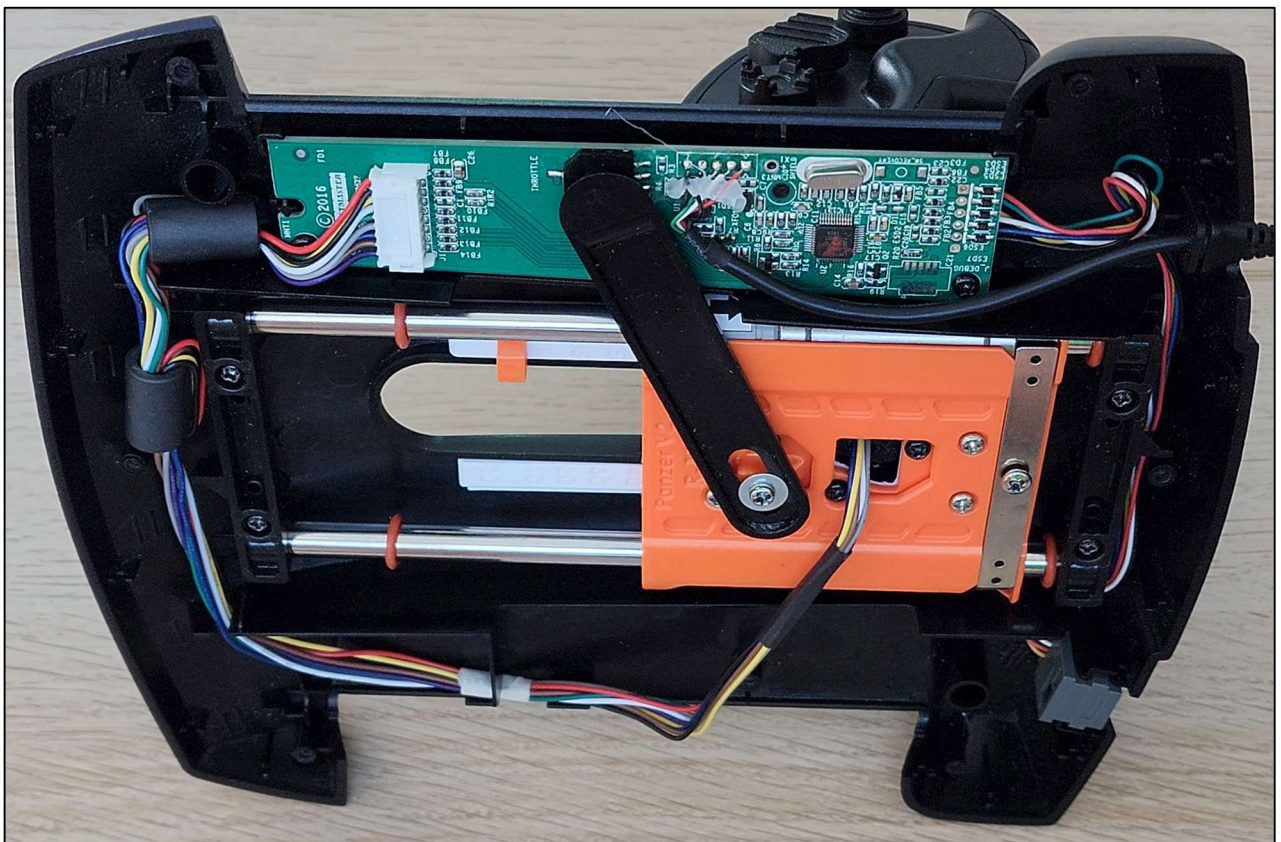
7.) Screw In the Potentiometer Arm onto the Slider. Make Sure to Screw in All the Way (Don't Forget to Install the Washer)



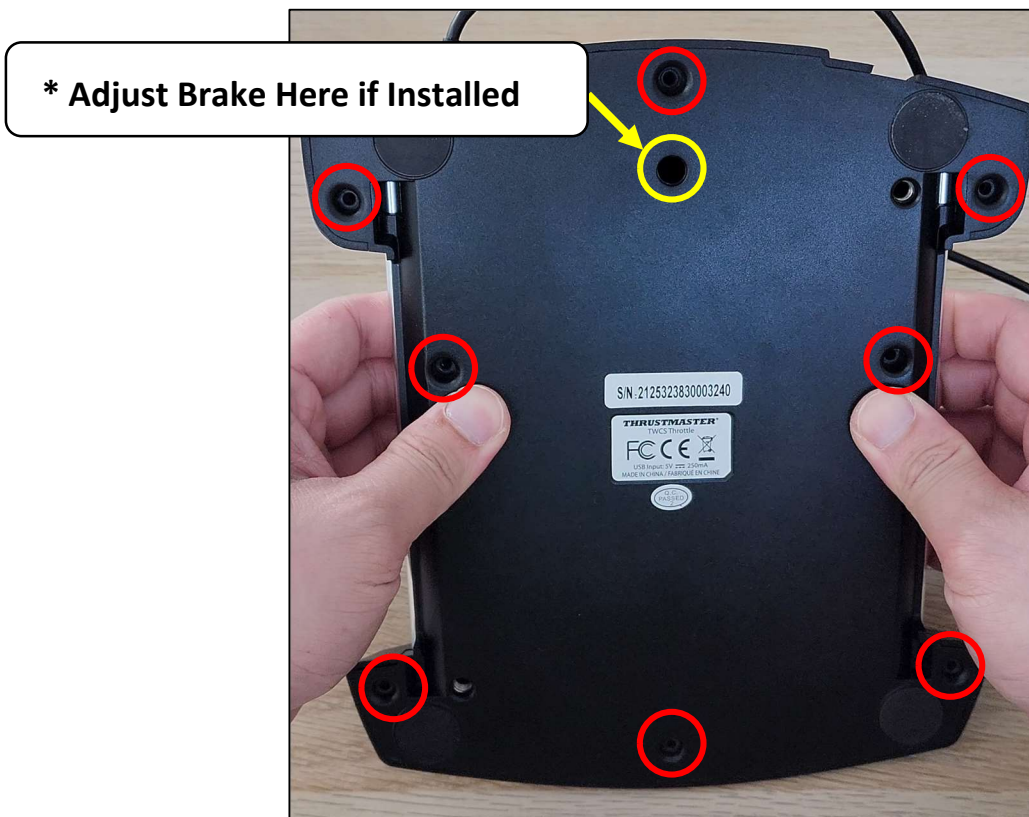
8.) Plug the Data Wires Back In



9.) Route the Wires and Cables as Shown to Avoid Pinching when Placing the Bottom Cover



10.)Place and Screw In the Bottom Cover
(Adjust Breaks if the Brakes were Installed)



11.)Enjoy



Installation Video

OLD Video: <https://www.youtube.com/watch?v=y-AcrPFekRI&t> (Outdated Design... For Rough Reference Only)

NEW Video: (NOT READY)